

MONON

GENERAL OFFICES: McCORMICK BUILDING
332 SOUTH MICHIGAN AVENUE, CHICAGO, ILLINOIS (60604)
Harrison 7-3303

W. C. COLEMAN, President, Chicago
W. C. COLEMAN, JR., VP-Trf. & Mkt., Chicago

SALES AND MARKETING DEPARTMENT

P. T. di LUSTRO, National Sales Manager, Chicago
WM. R. JONES, General Manager Coal Sales, Chicago
J. W. COLEMAN, Ass't. Gen. Mgr. Coal Sales, Chicago
O. W. EISEMON, Ass't. Gen. Mgr. Coal Sales, Chicago
H. L. HOFFMAN, Eastern Sales Manager, New York
J. R. MCCARTHY, Southern Sales Manager, Atlanta
W. T. FLINN, Western Sales Manager, Chicago
J. S. DAVIS, Midwest Sales Manager, Indianapolis
HORACE E. HARLAN, Special Representative, Greencastle, Ind.

FREIGHT TRAFFIC DEPARTMENT

C. A. PFISTER, Frt.-Trf. Mgr. (Rates)

PASSENGER TRAFFIC DEPARTMENT

C. G. SHOULTY, Dist. Passenger Sales Mgr., Chicago, Ill.
A. J. KREMER, Passenger Traffic Agent, Chicago, Ill.

	Telephone
Atlanta, Ga. (30303) —Room 702, 66 Luckie Street A. L. COUEY, District Sales Manager.	522-9462
Birmingham, Ala. (35203) —1610 First National Building EZRA C. BEASON, District Sales Manager.	322-0687
Boston, Mass. (02116) — 441 Statler Office Building, 20 Providence Street T. W. O'ROURKE, District Sales Manager.	482-9450
Charlotte, N. C. (28202) —1115 Baugh Building FRANK E. REDMON, District Sales Manager.	376-6637
Chicago, Ill. (60604) —332 South Michigan Avenue ADRIAN R. VOISS, District Sales Manager L. E. EICH, Ass't. District Sales Manager R. P. FISHER, Sales Representative. G. HARVEY KITSON, Sales Representative. J. C. KOZUBIK, Sales Representative.	427-3303
Cincinnati, O. (45203) Room S-105, Cincinnati Union Term. Bldg. CHARLES E. KOEHLER, District Sales Manager.	621-5040
Cleveland, O. (44129) — R. A. O'BRIEN, Ass't. District Sales Manager.	
Detroit, Mich. (48226) —1352 Book Building ROBERT J. MILLER, District Sales Manager.	965-0323 965-0324
Indianapolis, Ind. (46205) —1100 East 38th Street M. G. PRUETT, District Sales Manager. R. A. MURAWSKI, Sales Representative.	923-2511
Milwaukee, Wis. (53203) —231 West Wisconsin Ave. A. J. (GUS) SCHUMACHER, District Sales Manager KENNETH C. SCHAEFER, Sales Representative.	271-6792
Minneapolis, Minn. (55402) —1025 Soo Line Building MARVIN D. HUNSAKER, JR., District Sales Manager J. DON RICHARDSON, Sales Representative	336-3575
Nashville, Tenn. (37203) — Room 1310, 1808 West End Ave. H. K. COLEMAN, District Sales Manager	255-4917
New Albany, Ind. (47150) —201 Culbertson Ave. GENE P. ALOISIO, District Sales Manager. L. L. CRAWFORD, Ass't. District Sales Manager.	585-3389
New Orleans, La. (70113) 1238 National Bank of Commerce Building W. E. HEIPLE, District Sales Manager.	522-5149
New York, N. Y. (10036) —516 Fifth Avenue ARTHUR VON TOBEL, District Sales Manager. J. G. TIERNEY, Sales Representative	697-8058 697-8059
Orlando, Fla. (32801) —313 Rutland Building ALBERT L. BONE, District Sales Manager.	422-4720
Pittsburgh, Pa. (15222) —903 Arrott Building J. A. MARTIN, District Sales Manager. WALTER C. BOOTH, JR., Ass't. District Sales Manager.	281-2496
Portland, Ore.	266-9524
Seattle, Wash (98101) —1101 Vance Building ELTON N. MEADERS, District Sales Manager.	622-0969
Stevens Point, Wis. (54481) — JAMES BOSTICK, Sales Representative.	



MONON

BETWEEN

CHICAGO

AND

LOUISVILLE

Daily Service To Indiana's
Fine Universities.

EFFECTIVE APRIL 26, 1964

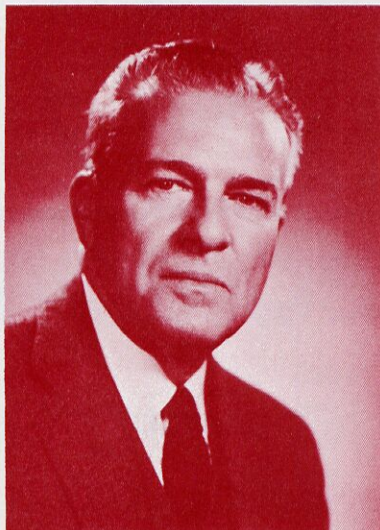
Passenger Train Schedules

Schedules herein are subject to
change without notice

Schedules Shown are **STANDARD TIME**

MONON

MONON



To Our Customers:

Your valued and appreciated patronage has made it possible to provide further improvements in our service and equipment. A survey of your travel needs was made by an independent marketing organization and we are presently studying their recommendations.

Many of the suggested improvements are presently being made and others will shortly follow. We are interested in and appreciate your patronage, and are extremely desirous in providing you the most comfortable and enjoyable transportation facility available between the points served by the Monon.

We always welcome your suggestions and criticisms. Whenever you have a desire to make them, let us hear from you.

W. C. Coleman

Chairman of the Board and President

Indianapolis Line

	Miles	Stations	
	6.6	Chicago Ill.	
	20.7	Englewood	
	25.5	Hammond, Ind.	
	29.0	Maynard	
	33.5	Dyer	
	39.5	St. John	
	44.8	Cedar Lake	
	52.6	Lowell	
	54.1	Shelby	
	56.5	Thayer	
	62.2	Rose Lawn	
	65.8	Fair Oaks	
	68.1	Parr	
	73.0	Surrey	
Freight Service Only	77.0	Rensselaer	Freight Service Only
	88.4	Pleasant Ridge	
	93.8	Monon	
	98.6	Guernsey	
	107.9	Monticello	
	111.0	Pittsburgh	
	115.8	Delphi	
	120.1	Harley	
	125.6	Ockley	
	136.0	Rossville	
	142.2	Frankfort	
	146.9	Cyclone	
	151.5	Kirklin	
	155.4	Terhune	
	159.9	Sheridan	
	163.4	Horton	
	167.8	Westfield	
	172.4	Carmel	
	175.3	Nora	
	178.5	Broad Ripple	
	183.5	Boulevard Station	
		Indianapolis, Ind.	

Midland Branch				Michigan City Branch				French Lick Branch				
	Miles	Stations		Miles	Stations		Miles	Stations		Miles	Stations	
	0	Wallace Junction ..		59.6	Michigan City		0	Orleans		0	Orleans	
	12.9	Jordan		51.1	Otis		7.6	Paoli		7.6	Paoli	
Freight Service Only	19.1	Patrickburg	Freight Service Only	47.1	Westville	Freight Service Only	16.6	West Baden	Freight Service Only	16.6	West Baden	Freight Service Only
	27.7	Clay City		45.0	Alida		17.7	French Lick		17.7	French Lick	
	42.0	Midland		43.1	Haskells							
	43.1	Vicksburg		39.4	Wanatah							
	47.1	Victoria		37.7	So. Wanatah							
				31.6	La Cosse							
				28.1	Wilders							
				23.3	San Pierre							
				15.2	Medaryville							
				8.6	Francesville							
				0.	Monon							

For Fast, Dependable Freight Service Ship **MONON**

MONON

Between Chicago, Lafayette, Bloomington & Louisville

Read Down

APRIL 26, 1964

Read Up

	The Thorough- Bred 5 Daily	Distance from Chicago	STATIONS All Schedules are CENTRAL STANDARD TIME (except New Albany, Ind and Louisville, Ky.)	The Thorough- Bred 6 Daily	
The Monon Rail- road serves many communi- ties in the heart of Indiana that offer exceptional opportunities for industrial expan- sion. Our Indus- trial Department is ready at all times to assist in such matters.	AM		Lv Chicago, Ill., Dearborn Station ...Ar	PM	
	10:00		Lv Englewood...63rd & Wallace Sts...Lv	4:30	
	10:14	6.6	Lv Hammond, Ind.....Calumet River..Lv	4:01	
	10:40	20.7	Lv Dyer	3:35	
	29.0	Lv St. John	
	33.5	Lv Cedar Lake.....Cedar Lake..Lv	
	39.5	Lv Lowell	
	11:08	44.8	Lv Cedar Creek..Lv	3:02	
	52.6	Lv Shelby	
	54.1	Lv Kankakee River..Lv	
	56.5	Lv Thayer	
	62.2	Lv Rose Lawn	
	65.8	Lv Fair Oaks	
	73.0	Lv Parr	
11:37	73.0	Lv Little Iroquois..Lv	2:33		
11:56	88.4	Lv Rensselaer	2:17		
.....	95.8	Lv Iroquois River..Lv		
.....	102.1	Lv Monon		
.....	106.2	Lv Monon Creek..Lv		
.....	112.9	Lv Reynolds		
Address your inquiries to Rudolph H. Gra- bow, Manager, Real Estate and Industrial De- velopment, 13th and J Streets, Bedford, Ind.	120.0	Lv Chalmers	
	12:42	129.5	Lv Brookston	
	132.9	Lv Brookston	
	1:07	137.0	Lv Battle Ground	
	143.5Tippecanoe Battlefield..Lv	
	1:22	147.3	Lv Lafayette	1:33	
	148.4	Lv Wabash River..Lv	
	157.8	Lv South Raubs	
	1:43	162.2	Lv Romney	
	168.7	Lv Wea Creek..Lv	
	2:04	177.8	Lv Linden	
	180.0	Lv Manchester	
	183.0	Lv Crawfordsville	12:53	
	189.2Turkey Run State Park	
Sandwiches, Coffee and Soft Drinks served between Bloom- ington and Crawfordsville.	194.0	Lv Ames	
	203.9	Lv Sugar Creek..Lv	
	2:59	213.1	Lv Ladoga	
	218.4	Lv Raccoon Creek..Lv	
	220.5	Lv Roachdale	12:32	
	235.4	Lv Bainbridge	
	3:42	245.8	Lv Greencastle	12:13	
	3:56	255.3	Lv Walnut Creek..Lv	
	4:10	261.5	Lv Limesdale	
	271.8	Lv Putnamville	
	282.1	Lv Cloverdale	
	290.2	Lv Waller Junction	
	293.4	Lv Eel River..Lv	
	299.5	Lv Gosport	
.....	315.6	Lv Ellettsville		
.....	317.5McCormick Creek State Park..Lv		
.....	324.1	Lv Bloomington	11:18		
.....Brown County State Park		
.....	Lv Guthrie		
.....	Lv Bedford	10:36		
.....	Lv White River..Lv	10:19		
.....	Lv Spring Mill State Park..Lv	10:09		
.....	Ar Orleans		
.....Ohio River		
.....	Ar Louisville, Ky., (E.S.T.)		
.....	Union Station	9:30		
.....	AM		

Northbound Train No. 6 makes good connections at Chicago with fast Streamlined trains to the West, on the Santa Fe, Burlington, Milwaukee, C. & N.W. and Rock Island Lines.

Southbound Train No. 5 connects with L&N No. 5 "Hummingbird" at Louisville for following Southern Points: Nashville, Birmingham, Montgomery, Mobile, Biloxi, and New Orleans.

Save Travel Dollars with Monon's Family Plan and Group Economy Plan Fares

GROUP ECONOMY PLAN

3 or more adults traveling together in Coaches for round-trip can save 25% under regular fares, where distance of one-way travel is 100 miles or more.

FAMILY FARE PLAN

Family tickets for COACH, round-trip — Example: One parent pays regular round-trip fare, the other parent and all family members age 12 thru 21 pay only one-way fare. Children under 12 pay 1/2 of one-way fare. Children under five free.

Special Party Excursion Fares Can Be Arranged

Visit Beautiful French Lick Via Monon.

For further information
**PLEASE CONSULT
TICKET AGENT OR
PASSENGER DEPT.**

Note—Taxi Service available between Orleans and French Lick. Notify Conductor.

Reclining Seats and Air Conditioned Coaches Regularly Assigned To All Trains

MONON RAILROAD

