



MONON SERVICE BETWEEN CHICAGO and LOUISVILLE

GENERAL OFFICES: McCORMICK BUILDING
332 S. MICHIGAN AVENUE, CHICAGO, ILLINOIS (60604) HARRISON 7-3303

W. C. COLEMAN, President, Chicago
J. J. STEIN, Vice President, Operations, Chicago
W. C. COLEMAN, JR., Vice President-Traffic and Marketing, Chicago

SALES AND MARKETING DEPARTMENT

C. A. PFISTER, Assistant Vice President-Traffic & Marketing, Chicago
WM. R. JONES, General Manager Coal Sales, Chicago
O. W. EISEMON, Assistant General Manager Coal Sales, Chicago
H. L. HOFFMAN, Eastern Sales Manager, New York
J. R. MCCARTHY, Southern Sales Manager, Atlanta
W. T. FLINN, Western Sales Manager, Chicago
PETE D. WALSH, Traffic Consultant, Chicago

FREIGHT TRAFFIC DEPARTMENT

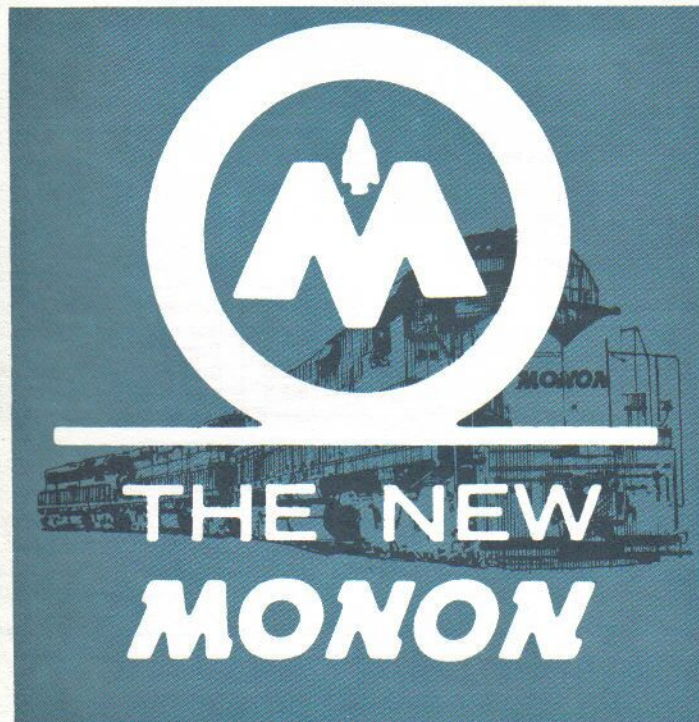
P. T. diLUSTRO, General Traffic Manager, Chicago

PASSENGER TRAFFIC DEPARTMENT

C. G. SHOULTY, District Passenger Sales Manager, Chicago, Ill.

FREIGHT SALES AGENCIES

	Telephone
Atlanta, Ga. (30303) — 710 Hartford Building.....	522-9462
A. L. COUEY, District Sales Manager	
Birmingham, Ala. (35203) — 1610 First National Building.....	322-0687
JAMES M. BOSTICK, District Sales Manager	
Boston, Mass. (02116) —	
441 Statler Office Building, 20 Providence Street.....	482-9450
T. W. O'ROURKE, District Sales Manager	
Charlotte, N. C. (28202) — 1115 Baugh Building.....	376-6637
ELTON N. MEADERS, District Sales Manager	
Chicago, Ill. (60604) — 332 South Michigan Avenue.....	427-3303
A. R. (BUZZ) VOISS, District Sales Manager	
L. E. EICH, Assistant District Sales Manager	
R. P. FISHER, Sales Representative	
G. HARVEY KITSON, Sales Representative	
Cincinnati, O. (45203)	
Room S-105, Cincinnati Union Terminal Building.....	621-5040
CHARLES E. KOEHLER, District Sales Manager	
Cleveland, O. (44115) — 715 E. Prospect Ave.....	621-3430
R. A. O'BRIEN, District Sales Manager	
Detroit, Mich. (48226) — 1352 Book Building.....	965-0323
ROBERT J. MILLER, District Sales Manager	
Indianapolis, Ind. (46205) — 1103 East 28th Street.....	923-2511
M. G. PRUETT, District Sales Manager	
T. R. WING, Sales Representative	
Milwaukee, Wis. (53203) — 231 West Wisconsin Ave.....	271-6792
A. J. (GUS) SCHUMACHER, District Sales Manager	
KENNETH C. SCHAEFER, Sales Representative	
Minneapolis, Minn. (55402) — 1025 Soo Line Building.....	336-3575
MARVIN D. HUNSAKER, JR., District Sales Manager	
THOMAS A. STRAND, Sales Representative	
Nashville, Tenn. (37203) — Room 1310, 1808 West End Ave.....	255-4917
H. K. COLEMAN, District Sales Manager	
New Albany, Ind. (47150) — 201 Culbertson Ave.....	585-3389
GENE P. ALOISIO, District Sales Manager	
L. L. CRAWFORD, Assistant District Sales Manager	
New York, N. Y. (10036) — 516 Fifth Avenue.....	697-8058
ARTHUR VON TOBEL, District Sales Manager	
J. G. TIERNEY, Sales Representative	
Orlando, Fla. (32801) — 313 Rutland Building.....	422-4720
ALBERT L. BONE, District Sales Manager	
Pittsburgh, Pa. (15222) — 801 Arrott Building.....	281-2496
J. A. MARTIN, District Sales Manager	



1966-INDIANA SESQUICENTENNIAL

Indiana is celebrating its 150th Birthday. Many special events are planned for this celebration. The Monon offers fast convenient service to many points of interest, and 4 beautiful State parks which have eating and sleeping accommodations (listed below) in the Hoosier State. Why not travel in Indiana (via Monon of course) in 1966?

PARK	MONON STATION
BROWN COUNTY STATE PARK	BLOOMINGTON
McCORMICKS CREEK STATE PARK	BLOOMINGTON
SPRING MILL STATE PARK	MITCHELL
TURKEY RUN STATE PARK	CRAWFORDSVILLE

For additional information about the Sesquicentennial write to:
INDIANA SESQUICENTENNIAL COMMISSION
Room 101, State Office Building
Indianapolis, Indiana

EFFECTIVE APRIL 24, 1966

Passenger Train Schedules

Schedules herein are subject to change without notice. The Monon Railroad will not be responsible for inconvenience, delay or damage resulting from delayed trains or failure to make connections.

Schedules shown are PREVAILING LOCAL TIME

MONON FREIGHT SERVICE

INDIANAPOLIS LINE (freight only)

Miles	Stations	Miles	Stations
	Chicago, Ill.	98.6	Monticello
6.6	Englewood	107.9	Pittsburgh
20.7	Hammond, Ind.	111.0	Delphi
25.5	Maynard	115.8	Harley
29.0	Dyer	120.1	Ockley
33.5	St. John	125.6	Rossville
39.5	Cedar Lake	136.0	Frankfort
44.8	Lowell	142.2	Cyclone
52.6	Shelby	146.9	Kirklin
54.1	Thayer	151.5	Terhune
56.5	Rose Lawn	155.4	Sheridan
62.2	Fair Oaks	159.9	Horton
65.8	Parr	163.4	Westfield
68.1	Surrey	167.8	Carmel
73.0	Rensselaer	172.4	Nora
77.0	Pleasant Ridge	175.3	Broad Ripple
88.4	Monon	178.5	Boulevard Station
93.8	Guernsey	183.5	Indianapolis, Ind.

MIDLAND BRANCH (freight only)

Miles	Stations	Miles	Stations
0	Wallace Junction . . .	27.7	Clay City
12.9	Jordan	37.5	Tamplin
16.0	Hoffman Spur	42.0	Midland
19.1	Patrickburg	43.1	Vicksburg
		47.1	Victoria

MICHIGAN CITY BRANCH (freight only)

Miles	Stations	Miles	Stations
59.6	Michigan City	37.7	So. Wanatah
56.0	Coleman	31.6	La Crosse
51.1	Otis	28.1	Wilders
47.1	Westville	23.3	San Pierre
45.0	Alida	15.2	Medaryville
43.1	Haskells	8.6	Francesville
39.4	Wanatah	0.	Monon

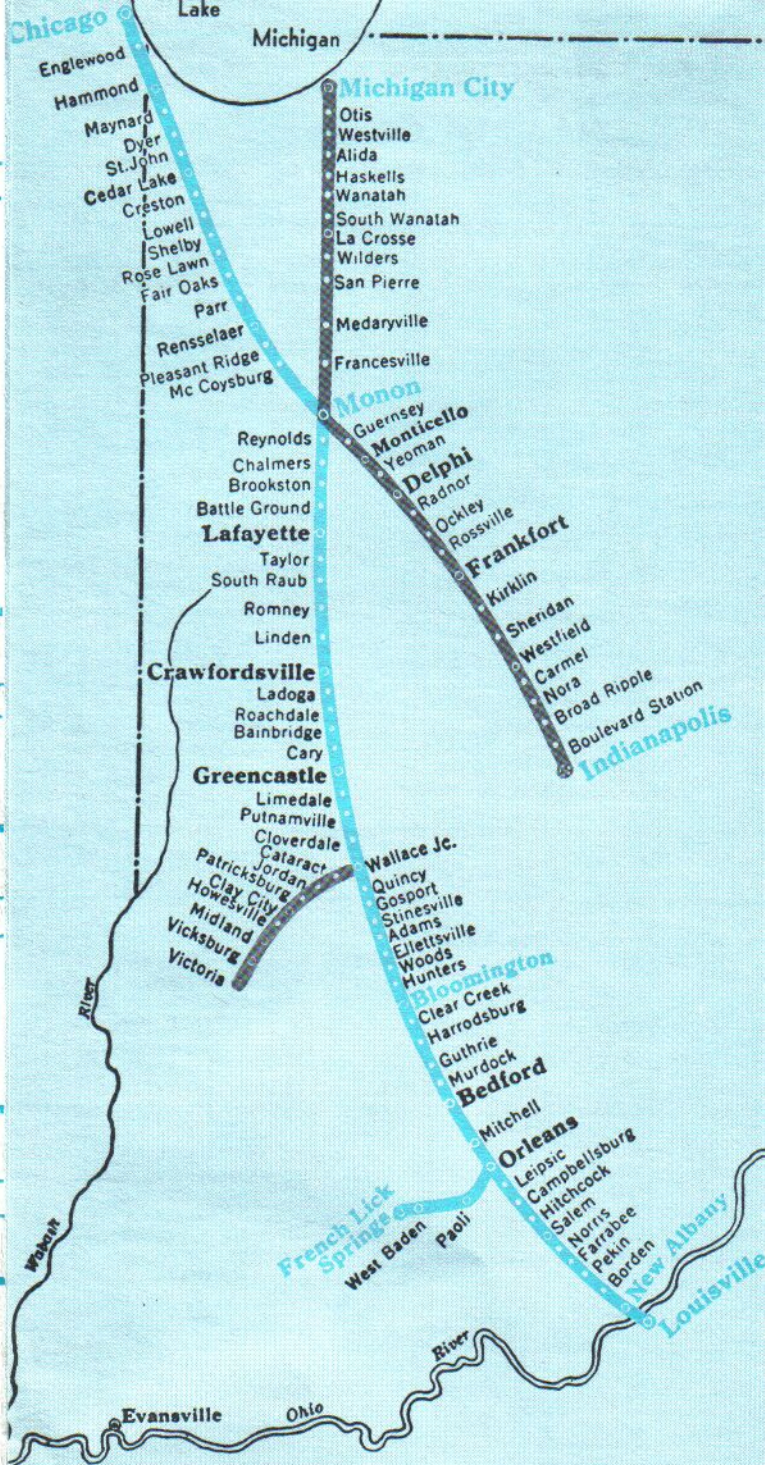
FRENCH LICK BRANCH (freight only)

Miles	Stations	Miles	Stations
0	Orleans	16.6	West Baden
7.6	Paoli	17.7	French Lick

FOR FAST, DEPENDABLE FREIGHT SERVICE SHIP **MONON**

Modernization, up-grading of equipment and property promises lower shipping and handling costs. Modern service includes:

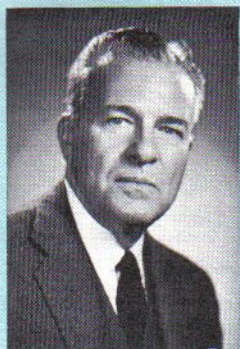
- Fleet of New ALCO DIESEL LOCOMOTIVES — 2,750 H.P. Each — Biggest motive power in U.S.A. High speed, fast turnaround, "Unitized" trains.
- New IBM COMPUTER SYSTEM . . . Complete programming and tracing reports on every shipment.
- Fleet of New "BIG JOHN" HOPPER CARS . . . Each carries 100-plus tons of bulk payload. Extra capacity pays off in substantial savings to shippers.
- Fastest, shortest, strongest link between traffic-rich Ohio River and booming industrial complex at foot of Lake Michigan.



Principal cities and areas in Indiana, Illinois and Kentucky served on the Monon Railroad's 540-mile system.

- PASSENGER & FREIGHT
- FREIGHT ONLY





TO OUR CUSTOMERS:

We wish to thank you, our Monon passengers, for the increased patronage of our trains.

It is our intention to make your trips comfortable and swift. Our newly constructed equipment is clean and tailor made for your enjoyment. We welcome you and your friends aboard for a pleasant trip.

W. C. Colman

Chairman of the Board and President

NEW MONON PASSENGER SPECIALS

Sandwiches, coffee and soft drinks served between Crawfordsville and Chicago.

Our faster schedule will allow you time in Chicago for business, sports events or sightseeing.

The "Thoroughbred" (northbound) will make more convenient connections with transcontinental trains at Chicago to the West Coast.

INDUSTRIAL SERVICE

The Monon serves many communities in the heart of Indiana that offer exceptional opportunities for industrial expansion. Our Industrial Department

is ready at all times to assist in such matters. Address inquiries to: Manager, Real Estate and Industrial Development, Lafayette, Indiana.

Passengers will have a better choice of trains returning to Chicago for connections with Monon No. 5 (southbound) to Indiana points and Louisville.

The "Thoroughbred" (southbound) connects with L & N trains at Louisville for following Southern Points: Nashville, Birmingham, Montgomery, Mobile, Biloxi, and New Orleans.

and children ages 12-21 pay only half the one-way fare. Youngsters under 12 go one-way for a quarter of the one-way fare. Children under 5 free.

GROUP ECONOMY PLAN

3 or more adults traveling together in Coaches for round-trip can save 25% under regular fares, where distance of one-way travel is 100 miles or more.

SAVE TRAVEL DOLLARS WITH MONON FAMILY PLAN AND GROUP ECONOMY PLAN FARES

FAMILY FARE PLAN

Family tickets for COACH, round-trip—Example: One parent pays regular round-trip fare, the other parent and all family members age 12 thru 21 pay only one-way fare. Children under 12 pay ½ of one-way fare. Children under five free.

ONE-WAY—when one parent pays the regular one-way fare, the other parent,

SPECIAL PARTY EXCURSION FARES CAN BE ARRANGED VISIT BEAUTIFUL FRENCH LICK VIA MONON

for further information

PLEASE CONSULT TICKET AGENT OR PASSENGER DEPT.



between

CHICAGO

LAFAYETTE

BLOOMINGTON and LOUISVILLE

Read Down

Read Up

The Thorough-Bred 5 Daily	Distance from Chicago	STATIONS All Schedules are PREVAILING LOCAL TIME	The Thorough-Bred 6 Daily
PM		CENTRAL DAYLIGHT TIME	PM
6:25		Lv Chicago, Ill., Dearborn Station...Ar	2:05
6:40	6.6	Lv Englewood, 63rd & Wallace Sts...Lv	1:50
7:08	20.7	Lv Hammond, Ind...Calumet River...Lv	1:20
.....	29.0	Lv Dyer.....Lv
.....	33.5	Lv St. John.....Lv
.....	39.5	Lv Cedar Lake.....Cedar Lake...Lv
7:38	44.8	Lv Lowell.....Cedar Creek...Lv	12:44
.....	52.6	Lv Shelby.....Kankakee River...Lv
.....	54.1	Lv Thayer.....Lv
.....	56.5	Lv Rose Lawn.....Lv
.....	62.2	Lv Fair Oaks.....Lv
.....	65.8	Lv Parr.....Little Iroquois...Lv
8:07	73.0	Lv Rensselaer.....Iroquois River...Lv	12:15
		EASTERN STANDARD TIME	
8:26	88.4	Lv Monon.....Monon Creek...Lv	12:00
.....	95.8	Lv Reyonlds.....Lv
.....	102.1	Lv Chalmers.....Lv
.....	106.2	Lv Brookston.....Lv
.....	112.9	Lv Battle Ground.....Lv
	Tippecanoe Battlefield...Lv	
9:13	120.0	Lv Lafayette.....Wabash River...Lv	11:20
.....	129.5	Lv South Raubs.....Lv
.....	132.9	Lv Romney.....Wea Creek...Lv
.....	137.0	Lv Linden.....Lv
.....	143.5	Lv Manchester.....Lv
9:48	147.3	Lv Crawfordsville.....Lv	10:43
.....	Turkey Run State Park	
.....	148.4	Lv Ames.....Sugar Creek...Lv
.....	157.8	Lv Ladoga.....Raccoon Creek...Lv
.....	162.2	Lv Roachdale.....Lv
.....	168.7	Lv Bainbridge.....Lv
10:21	177.8	Lv Greencastle.....Walnut Creek...Lv	10:05
.....	180.0	Lv Limedale.....Lv
.....	183.0	Lv Putnamville.....Lv
.....	189.2	Lv Cloverdale.....Lv
.....	194.0	Lv Wallace Junction.....Eel River...Lv
.....	203.9	Lv Gosport.....Lv
.....	213.1	Lv Ellettsville.....Lv
	McCormick Creek State Park...Lv	
11:15	220.5	Lv Bloomington.....Lv	9:13
.....	Brown County State Park..	
.....	235.4	Lv Guthrie.....Lv
11:56	245.8	Lv Bedford.....White River...Lv	8:31
12:09	255.3	Lv Mitchell...Spring Mill State Park...Lv	8:15
12:20	261.5	Ar Orleans.....Lv	8:05
		French Lick (See Note).....	
.....	271.8	Lv Campbellsburg.....Lv
12:42	282.1	Lv Salem.....Blue River...Lv	7:41
.....	290.2	Lv Farrabee.....Lv
.....	293.4	Lv Pekin.....Blue River...Lv
.....	299.5	Lv Borden.....Silver Creek...Lv
.....	315.6	Lv Vernia.....Lv
1:30	317.5	Lv New Albany, Ind.....Lv	6:58
	Ohio River	
2:10 AM	324.1	Ar Louisville, Ky.....Union Station.Lv	6:30 AM

Note—Taxi Service Available between Orleans and French Lick. Notify Conductor. Reclining Seats and Air-Conditioning Coaches Regularly Assigned To All Trains.